

# Foxy Jib Arm:

Panther GmbH, Raiffeisenallee 3, 82041 Oberhaching, Germany  
Tel: +49-89-613900-01, Fax: +49-89-6131000, www.panther.tv

## Quick Information











Please look into operating manual for further information!

## Schnellinformation

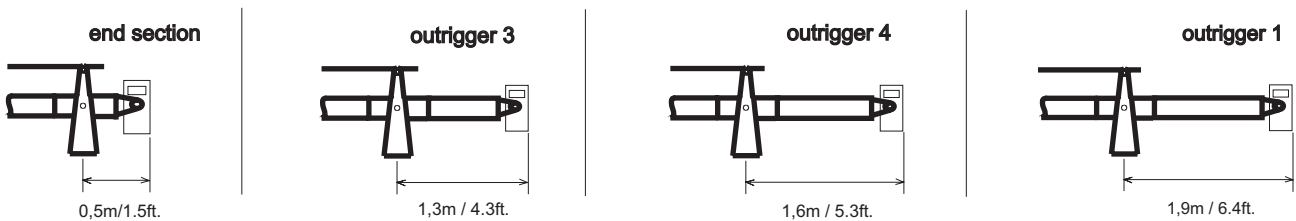
Bitte beachten Sie die Betriebsanleitung für weitere Informationen!

### Parts:

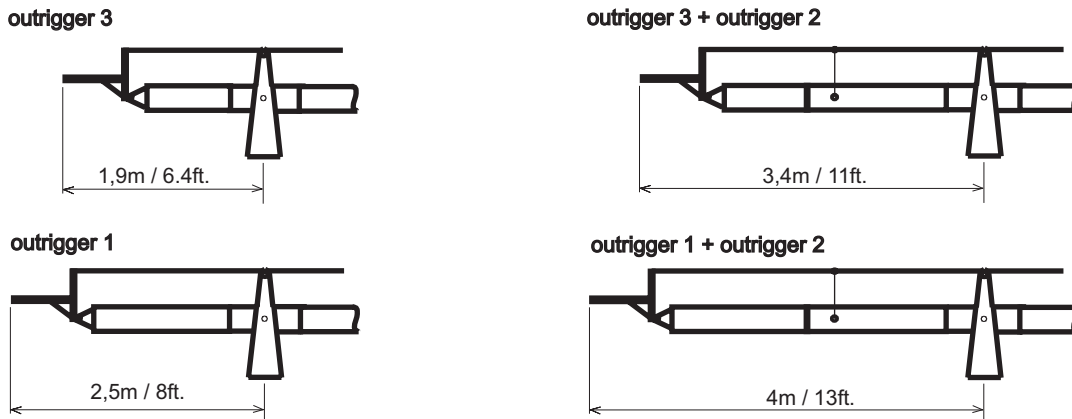
#### Einzelteile:

Code/Nr.	Description/Beschreibung			
159541	Euro-Foxy Adapter		129180	Outrigger 3 Ausleger 3 
126896	Central Pivot Section Mittelteil		145115	Outrigger 4 Ausleger 4 
136770	End section Endstück		131240	Ring Adapter for Outrigger 3 Adapterringe für Ausleger 3 
126898	Outrigger 1 Ausleger 1 		127066	Remote Head Mount Foxy Remote Galgen Foxy 
126897	Outrigger 2 Ausleger 2 		139692	Weight Gewicht 

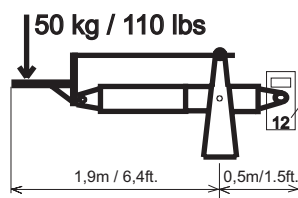
### Rear side / Hintere Seite:



### Front side / Vordere Seite:

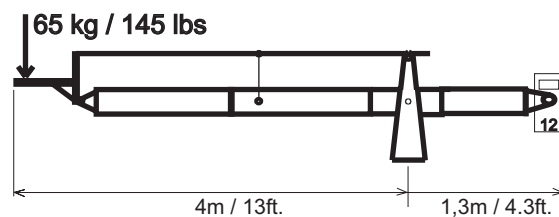


### Examples / Beispiele:



Necessary number of Panther counterweights in bucket (e.g. 12 pcs.) for max. payload.

Nötige Anzahl der Panther Gegengewichte im Korb (z.B. 12 St.) für max. Traglast.



Necessary number of Panther counterweights in bucket (e.g. 12 pcs.) for max. payload.

Nötige Anzahl der Panther Gegengewichte im Korb (z.B. 12 St.) für max. Traglast.

1 Panther counterweight / Gegengewicht = approx./ ca. 17kg (37.5lbs)